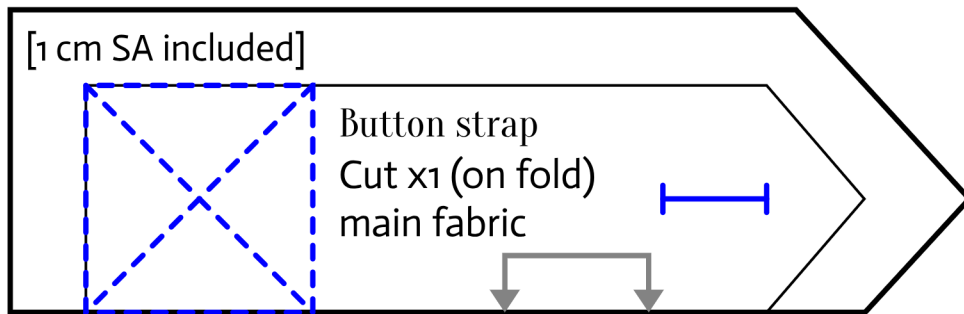
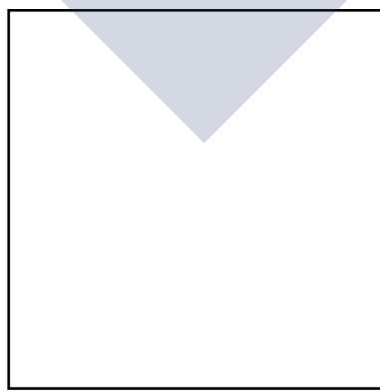


1



[2 cm hem]

Inner pocket

Cut x1 main fabric

[1 cm SA included]



The Festival Bag

[1 cm SA]

2



The Festival Bag

[1 cm SA included]

Pocket top  
Cut x1 main fabric



The Festival Bag



The Festival Bag

3

## Strap

Cut x4 on fold main fabric  
(Optional cut x4 interfacing)  
[1 cm SA included]



[1 cm SA included]

Pocket bottom  
Cut x1 main fabric



The Festival Bag

## Sleeve

Cut x2 main fabric  
(Optional x2 interfacing)  
[1 cm SA included]

## Base

Cut x1 main fabric

(Optional x1 interfacing)

Cut x1 lining

[1 cm SA included]



The Festival Bag



4

5

Strap placement

Inner pocket placement

